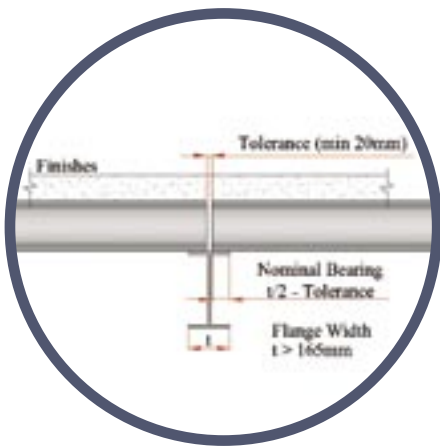
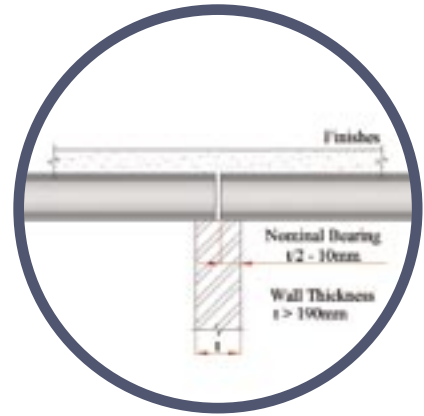


Technical Details

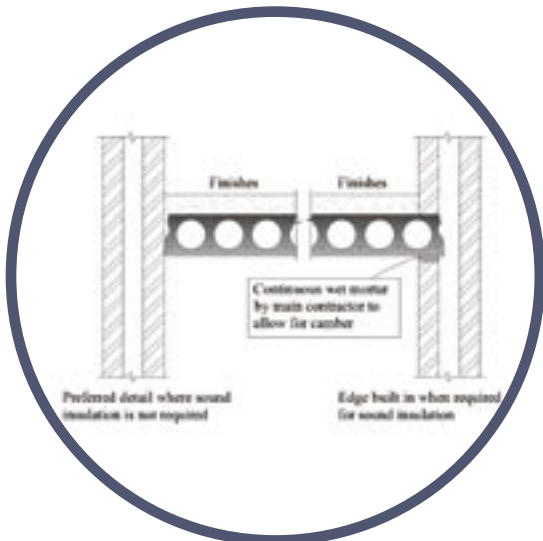
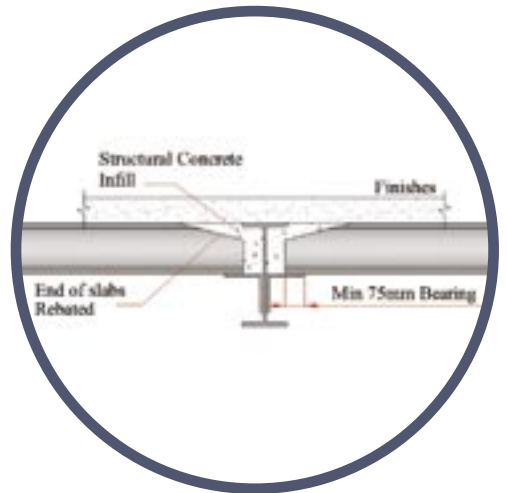
SpanWright.co.uk

Technical Team - Our technical team will be pleased to assist you regarding all technical and design information. They can be contact at info@spanwright.co.uk



Bearings - We recommend a nominal bearing of 100mm on masonry or 75mm on steelwork and structural concrete, but these can be reduced in specific circumstances, by agreement with our technical department

Compliance - All our details fully comply with the recommendations of the Precast Flooring Federation



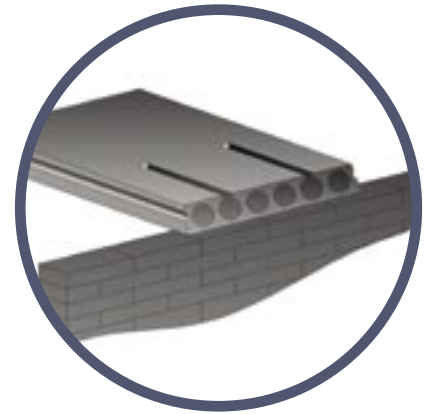
Camber - Prestressed hollowcore units will exhibit a degree of camber, the extent of which will depend upon span and the amount of prestress in the slab. Due allowances must be made for this in determining finishes and the overall floor thickness. The specified thickness of structural topping must be provided at the point of maximum camber

For more information contact our office:
Mob: 07543 180455
Tel: 00353 4297 44500
Fax: 00353 4297 44501
Email: sales@spanwright.co.uk

Technical Details

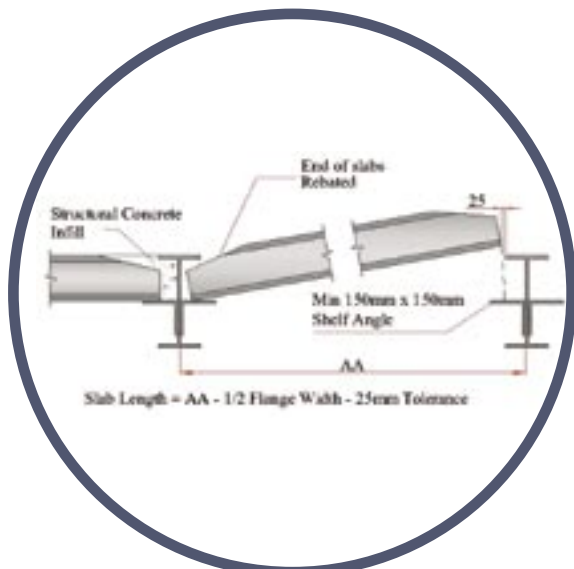
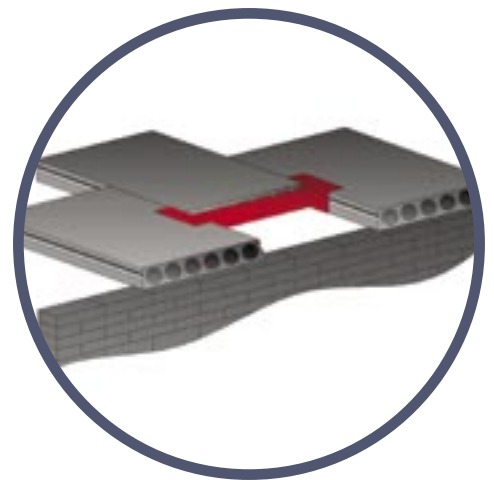
Spanwright.co.uk

Disproportionate Collapse - Our hollowcore floors can be manufactured to fully comply with the building regulations classification for disproportionate collapse, for both masonry and steel structures. Our technical department will be able to advise you on what is required for your particular situation



Fire Resistance - All hollowcore slabs have a 1 hour fire resistance. This can be further enhanced if required. For further information contact our technical department

Openings - Small service openings (up to 75mm dia) can be post drilled on site directly through the cores. Medium sized openings up to 300mm wide in a standard full width unit are generally permitted subject to design checks. These will be factory formed. Large openings up to 1200mm are accommodated by using mild steel trimmers as shown. All openings should be agreed with our technical department at an early stage



Finishes - Our prestressed hollowcore units are manufactured on heated steel casting beds which provides a high standard of finish to type A Clause 6.11.3 of BS 8110. They are well suited for use in an exposed condition e.g. car parks or for direct decoration using appropriate paints

For more information contact our office:
Mob: 07543 180455
Tel: 00353 4297 44500
Fax: 00353 4297 44501
Email: sales@spanwright.co.uk